



PREPARED EXCLUSIVELY FOR FFI MEMBERS

Featuring the 2021 FFI Organizational Members – Part V

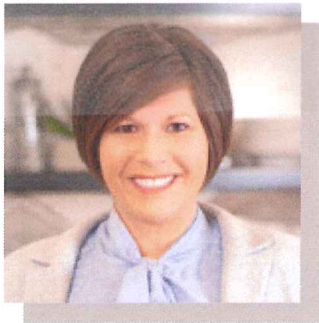
JULY 16, 2021



PRAIRIE
FAMILY BUSINESS
ASSOCIATION

An outreach center of the Beacom School of Business at the University of South Dakota

Prairie Family Business Association (PFBA) is an outreach center of the Beacom School of Business at the University of South Dakota that provides family businesses with the tools to thrive through generations. PFBA helps family businesses to succeed by providing high quality educational content, by being professional, by being focused, by building connections, and by Stephanie Larscheid, PFBA Executive Director; Sandra McNeely, FFI board member and treasurer; Alex Patnaud, PFBA Office Manager; and Rebecca Zabel, PFBA Business Development Manager.



Addie Graham-Kramer



Larry D. Hause
FFI Fellow



Stephanie Larscheid



Sandra McNeely
Board member



Alex Patnaud



Rebecca Zabel